


How to Choose Solution




Fitzpatrick Scale = DHA% for Traditional Solutions & Set time for Rapid Solutions

Fair Skin

Traditional Solution
6% to 10%



TYPE 1




TYPE 2

Rapid Solution Set Time


30 min - 2 hrs. 1 hrs. - 2.5 hrs.

Medium Skin

Traditional Solution
8% to 12%



TYPE 3



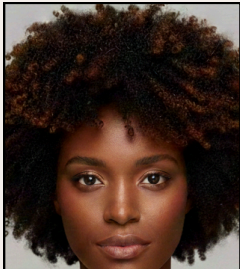
TYPE 4

Rapid Solution Set Time


2 hrs. - 3.5 hrs. 2.5 hrs. - 4 hrs.

Dark Skin

Traditional Solution
12% to 16%



TYPE 5



TYPE 6

Rapid Solution Set Time

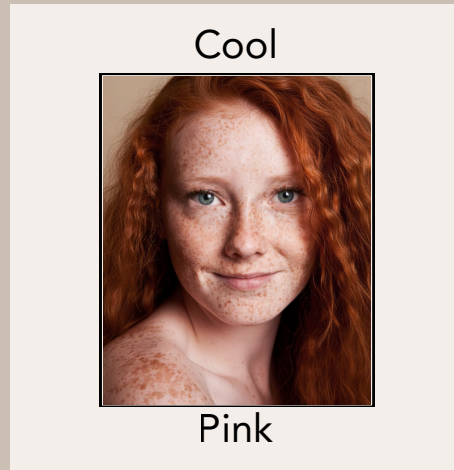
3 hrs. - 5 hrs. 4.5 hrs. - 6 hrs.

How to Choose Solution



Client Undertone = Solution Color Selection

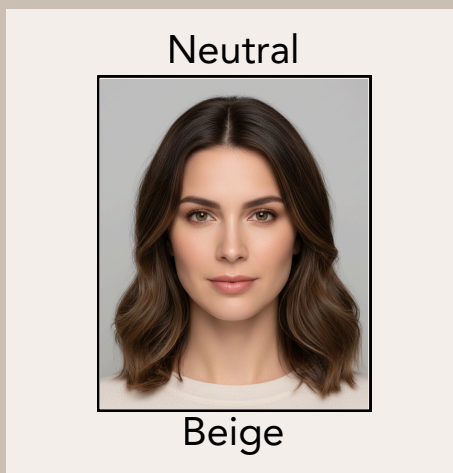
When choosing a solution color base, you are either neutralizing unwanted tones, enhancing the skin's natural undertones, or creating contrast to achieve a deeper, more bold result.



Neutralize = Olive

Natural = Pink

Bold = Violet, Ash, Yellow



No Need to Neutralize

Natural = Brown, Golden

Bold = Violet, Red



Neutralize = Violet

Natural = Brown, Olive

Bold = Violet, Red, Ash